

celebrating
21 over
YEARS
of partnerships
with industry!

**PROVIDING EXPERIENTIAL
PLACEMENT OPPORTUNITIES
THRU WORK-INTEGRATED LEARNING**

- > Producing work – ready graduates
- > Promoting employment and job creation
- > Providing career planning opportunities
- > Sponsoring graduate placement opportunities
- > Ensuring quality facilitation and learner support
- > Providing quality hands on and critical skills training
- > Addressing scarce skills and skills development needs

20 000 undergraduate students benefited in 2007



**SOUTHERN AFRICAN SOCIETY
FOR CO-OPERATIVE EDUCATION**

MEMBERSHIP APPLICATION FORM

CORPORATE MEMBERSHIP ZAR 5000.00 pa
(5 members with voting rights)
INDIVIDUAL MEMBERSHIP ZAR 850.00 pa

TYPE OF MEMBERSHIP

Corporate Individual

TITLES, INITIALS AND SURNAME

(of individual member or contact name of corporate member)

Company Name _____

Postal Address _____

Country _____ Postal Code _____

Tel no _____ Fax no _____

Cell _____ E-mail _____

(Cheques to be made payable to SASCE)
Payments may be made directly into the SASCE Bank Account

Nedbank, Newton Park
Account Type Current Account No 1213051517 Branch No 121317

Kindly fax a copy of the deposit slip or EFT to
SASCE: Secretariat, Mr Alpheus Maphosa
Vaal University of Technology (VUT)
Fax 27(0)16 950 9817 / 9759 Tel 27(0)16 950 9372 / 9137



**SOUTHERN AFRICAN
SOCIETY FOR CO-OPERATIVE
EDUCATION**

Join SASCE today!

**PARTNERSHIP
THRU MEMBERSHIP**

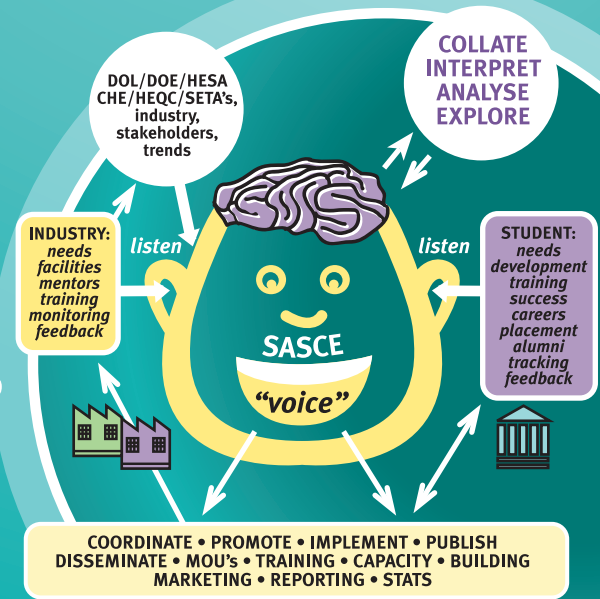
WHO AND WHAT IS SASCE?

we encourage, listen, invite, collate, analyse, interpret, research, disseminate

(SASCE) The Southern African Society for Co-operative Education is a non profit organization dedicated to helping interested individuals and institutions integrating academic studies with quality work integrated learning. It actively advocates co-operative education partnerships throughout Southern Africa. The key success of co-operative education is that students are able to graduate and have the competitive advantage of entering the world of work with the benefit of accredited work experience related to their respective disciplines.

mission to foster the practice of co-operative education and facilitate the participation of all stakeholders in Southern African through promotional and educational activities. SASCE strives to fulfill its mission by:

- Promoting co-operative education as an effective educational philosophy.
- Encouraging and promoting co-operative education research development.
- Encouraging the establishment of information resources on co-operative education.
- Creating opportunities for dialogue between practitioners of co-operative education at regional, national and international levels.
- Formally recognized by individuals and organizations.



how?

YOU WILL BENEFIT AS A COMPANY THRU MEMBERSHIP WITH SASCE

...the following benefits are in line with the four SASCE strategic planning goals!

we will

we will

we will

we will

...as ACCREDITATION & AUTHORITY VOICE

- Grant you recognition and accreditation status for your company
- Give you access to new graduate placement opportunities
- Celebrate excellence with merit awards for quality service
- Give you access to the contact details of co-operative education practitioners
- Update you on Work Integrated placement progress nationally
- Set up a national database on all Cooperative Education activities

...as MARKETING & COMMUNICATION

- Advertise and promote your company products and services
- Host an interactive Website and SASCE Newslink newsletter
- Invite you to participate in Conferences, Seminars and Workshops
- Provide training for industry mentors and supervisors
- Provide and facilitate links with the SETA's
- Invite you to participate in Graduate Fairs and Careers Expo's

...for CURRICULUM & QUALITY PROVISION

- Bring you the latest updates on work integrated learning programme design
- Invite you to serve on our industry Advisory Committees
- Ensure that our qualifications remain relevant to industry needs
- Let you experience our undergraduate students for future permanent placements
- Invite you to participate in student promotions and programme review
- Showcase and celebrate success stories and to share best practise

...for RESEARCH & DEVELOPMENT

- Bring you feedback by students & trends on their WIL experiences
- Ask you to provide feedback on experiences with our students
- Provide impact assessment and trends on programme successes
- Provide stats on placement successes by region, programme and institution
- Promote and publish action research linked to industry R&D
- Update you on national and international trends in Co-operative Education
- The Secretariat of SASCE is located at VUT, the Vaal University of Technology.
- SASCE will be setting up a full-time office with an Executive Director, secretariat and administration to ensure that we deliver on our promises to our membership.



SOUTHERN AFRICAN SOCIETY FOR CO-OPERATIVE EDUCATION